

Gaia Predassi Showreel - Shots Breakdown



Spyro - Nickelodeon – *Video Game TV Commercial*

Animation, Texturing, Particle FX, Lighting & Rendering – *Maya, Photoshop & After Effects*



She Devil – *Test*

Character Design, Modelling (NURBS patches), Skinning (muscle system) & Rigging, Animation, Texturing, Lighting, Rendering – *Maya & Photoshop*.



One Eyed Monster – Playstation – *TV Commercial Pitch (short deadline)*

Character Design, Modelling (NURBS), Rigging, Animation, Texturing, Lighting, Rendering, Compositing – *Maya, Photoshop & After Effects*.



BBC 'Jackanory' Special – 'Muddle Earth' – *45 minutes TV Children Special*

Rendered Look Development & Art Direction, Set Design & some Modelling, Camera Match, Live Action Lighting Design, CG Lighting, Texturing, Rendering – *Maya, Photoshop & After Effects*.



BBC 'Jackanory' Special – 'The Magician of Samarkand' – *45 minutes TV Children Special*

Lizard Design, Concept Painting, Modelling, Set-up, Animation, Texturing, Lighting, Rendering, Compositing – *Maya, Photoshop & After Effects*.



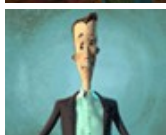
BBC 'Jackanory' Special – 'Muddle Earth' – *45 minutes TV Children Special*

Camera Match, Lighting, Texturing, rendering – *Maya & After Effects*.



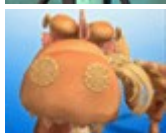
BBC 'Jackanory' Special – 'Muddle Earth' – *45 minutes TV Children Special*

Rendered Look Development & Art Direction, Set Design, Camera Set-up, Live Action Lighting Design, CG Lighting, Texturing, Rendering – *Maya, Photoshop & After Effects*.



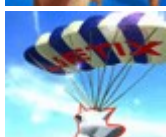
Albert – *Short Film*

Directing, Animating, Characters & Sets Design, Story Boarding, Modelling (NURBS), Rigging, Texturing, Lighting, Rendering, Compositing – *Maya, Photoshop & After Effects*.



Dairylea – *30" TV Commercial & Print Campaign*

Shading & Texturing, Lighting, Rendering (all shots) – *Maya, Photoshop & After Effects*.



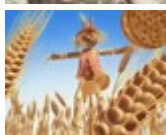
Jetix – *45" TV Commercial*

Modelling, Texturing, Lighting, Rendering – *Maya & Photoshop*.



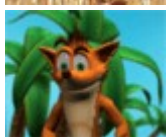
CO-OP – *30" TV Commercial*

Team Leading, secondary Animation, Sets Design, Modelling, Texturing, Characters Fur, Lighting, Effects, Rendering, Compositing (all shots) – *Maya, Photoshop & After Effects*.



Dairylea – *30" TV Commercial & Print Campaign*

Shading & Texturing, Lighting, Rendering (all shots) – *Maya, Photoshop & After Effects*.



Crash - Nickelodeon – *Video Game TV Commercial*

Modelling, Animation, Texturing, Lighting, Rendering – *Maya & Photoshop*.



Jetix – 45” TV Commercial

Modelling, Texturing, Lighting, Rendering – *Maya & Photoshop.*



CO-OP – 30” TV Commercial

Team Leading, secondary Animation, Sets Design, Modelling, Texturing, Characters Fur, Lighting, Effects, Rendering, Compositing (all shots) – *Maya, Photoshop & After Effects.*



BBC 'Jackanory' Special - 'Muddle Earth' – 45 minutes TV Children Special

Rendered look Development & Art Direction, Character Animation, Set Design & some Modelling, Camera Setup, Matte Painting, Texturing, Live Action Lighting Design, CG Lighting, Rendering, Compositing – *Maya, Photoshop & After Effects.*



Disney - 'Mickey's Club House' – Interactive Fly Trough - Disney's Website

Set Design, Modelling, Camera Animation, Texturing, Lighting, Rendering – *Maya & Photoshop.*



BBC 'Jackanory' Special - 'Muddle Earth' – 45 minutes TV Children Special

Rendered Look Development & Art Direction, Set Design, Camera Animation, Texturing, Matte Painting, Lighting, Rendering – *Maya, Photoshop & After Effects.*



Disney - 'Mickey's Club House' – Interactive Fly Trough - Disney's Website

Set Design, Modelling, Camera Animation, Texturing, Lighting, Rendering – *Maya & Photoshop.*



BBC 'Jackanory' Special - 'Muddle Earth' – 45 minutes TV Children Special

Rendered Look Development & Art Direction, Set Design & some Modelling, Live Action Lighting Design, CG Lighting, Texturing, Rendering – *Maya & Photoshop.*



Disney - 'Mickey's Club House' – Interactive Fly Trough - Disney's Website

Set Design, Modelling, Camera Animation, Texturing, Lighting, Rendering – *Maya & Photoshop.*



BBC 'Jackanory' Special - 'Muddle Earth' – 45 minutes TV Children Special

Rendered Look Development & Art Direction, Set Design, Texturing, Matte Painting, Lighting, Rendering – *Maya & Photoshop.*



BBC 'Jackanory' Special - 'The Magician of Samarkand' – 45 minutes TV Children Special

Lizard Character Design, Concept Painting, Modelling, Rigging, Animation, Texturing, Lighting, Rendering, Compositing – *Maya, Photoshop & After Effects.*



BBC 'Jackanory' Special - 'The Magician of Samarkand' – 45 minutes TV Children Special

Mouse Character Design, Concept Painting, Modelling, Rigging, Animation, Texturing, Lighting, Rendering – *Maya, Photoshop & After Effects.*



BBC 'Jackanory' Special - 'The Magician of Samarkand' – 45 minutes TV Children Special

Camera Match, Texturing, Lighting, Rendering – *Maya, Photoshop & After Effects.*



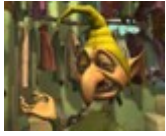
Mushroom – Test

Character Design, Modelling (NURBS), Animation, Texturing, Lighting, Rendering, Compositing – *Maya, Photoshop & After Effects.*



BBC 'Jackanory' Special - 'Muddle Earth' – 45 minutes TV Children Special

Rendered Look Development & Art Direction, Texturing, Lighting, Rendering – *Maya, Photoshop & After Effects.*



BBC 'Jackanory' Special - 'Muddle Earth' – 45 minutes TV Children Special
 Rendered Look Development & Art Direction, Set Design, Camera Set-up, Live Action Lighting Design, CG Lighting, Texturing, Rendering – Maya, Photoshop & After Effects.



Giraffe – TV Commercial Pitch
 Character Design, Modelling (NURBS), Rigging, Texturing, Lighting, Rendering – Maya & Photoshop.



Homepride – 30" TV Commercial
 Modelling, Animation, Texturing, Lighting, Rendering – Maya & After Effects.



Sabrina - Nickelodeon – TV Bumpers
 Character Design, Modelling (NURBS), Rigging, Animation, Texturing, Lighting, Rendering – Maya & Photoshop.



Bingo Lotto - Satchi & Satchi – TV Titles & Commercials
 CG Supervision & Animation – Maya, Photoshop & After Effects.



Norwich & Peterborough Building Society – TV Commercial Pitch
 Modeling (NURBS), Rigging, Animation, Set Design, Texturing, Lighting, Rendering – Maya & Photoshop.



Wrigleys – TV Commercial Pitch
 Modelling (NURBS), Rigging, Animation, Texturing, Lighting, Rendering – Maya & Flash



Red Button - Nickelodeon – 30" TV Commercial
 Character Design, Modelling (NURBS), Rigging, Animation, Texturing, Lighting, Rendering, Compositing -
 Maya, Photoshop, Flash & After Effects.



Britannia Building Society – 30" TV Commercial
 Preliminary Modelling & Animation Tests, Paint Effects Chalk Outline Tests, Customised Maya Sliders for 'Replacement' Animation Technique – Maya & Photoshop.



Love Compilation – TV Commercial
 Modelling (NURBS), Animation, Texturing, Lighting, Rendering – Maya & Photoshop



Discovery Evenings – TV Commercial
 Design, Modelling, Rigging, Animation, Texturing, Rendering – Maya, Flash & Photoshop.



Gala Bingo – 30" Pitch & TV Commercial
 Modelling (NURBS), Rigging, Animation, Texturing, Lighting, Rendering – Maya & Photoshop



Chilly Pepper – Test
 Character Design, Modelling (NURBS), Rigging, Animation, Texturing, Lighting, Rendering, Compositing – Maya, Photoshop & After Effects.



The Legend of the Tamworth Two – Film Test
 Modelling (NURBS), Rigging, Camera Match, Animation, Texturing, Lighting, Rendering, Compositing – Maya, Photoshop & After Effects.



E4 – Sting Test

Character Design, Modelling (NURBS Patches), Rigging, Animation, Texturing, Lighting, Rendering, Compositing – *Maya, Photoshop & After Effects.*



E4 – Sting Test

Character Design, Modelling (NURBS), Rigging, Animation, Texturing, Lighting, Rendering, Compositing – *Maya, Photoshop & After Effects.*



Polo – 30” TV Commercial

Background CG Elements, CG Lighting, Effects, Rendering – *Maya.*



Luck Ducks - Asbro – 30” TV Commercial

Team Leading, Character Modeling (NURBS), Rigging, Texturing, Lighting, Rendering – *Maya & Photoshop.*



BBC 'Jackanory' Special - 'Muddle Earth' – 45 minutes TV Children Special

Rendered Look Development & Art Direction, Texturing, Matte Painting, Lighting, Rendering – *Maya, Photoshop & After Effects.*



BBC 'Jackanory' Special - 'Muddle Earth' – 45 minutes TV Children Special

Rendered Look Development & Art Direction, Set Design, Camera Match & Animation, Matte Painting, Texturing, Lighting, Rendering, Compositing – *Maya, Photoshop & After Effects.*



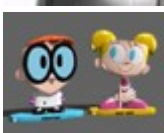
Eristoff – Logo Branding Animations

Design, Animation, Texturing, Lighting & Rendering – *Maya, Photoshop. & After Effects*



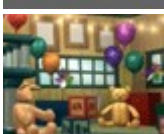
Sony Aibo – Product Pre-Visualisation

Modelling (NURBS), Rigging, Animation, Texturing, Lighting, Rendering – *Maya & Photoshop.*



Cartoon Network - Kellogg's _ 30” Pitch & TV Commercial

Modelling (NURBS), Animation, Texturing, Lighting, Rendering – *Maya & Photoshop.*



Disney - 'Mickey's Club House' – Interactive Fly Trough - Disney's Website

Set Design, Modelling, Camera Animation, Texturing, Lighting, Rendering – *Maya & Photoshop.*



Fish - ONE Post – Screen Saver

Character Design, Modelling (NURBS), Rigging, Animation, Texturing, Lighting, Rendering – *Maya & Photoshop.*